

# HOTOJIMA

## Walking map

When Fujiwara no Sumitomo came to the island to exterminate pirates, he himself became a pirate and used the cave as his base for pirating.

Hatoudo (a cave)

Hamayu

You will be able to see Shikoku to your right.

Guardian god of Hotojima, from where the Mikoshi start in the Summer Festival.

Kamo Shrine

The gate that connects to Tsushima. When praying, the sound of clapping can be heard echoing across the island.

Looking back at Ishizuchi Mountain

Air raid shelter remains Well

Ebisu Sama

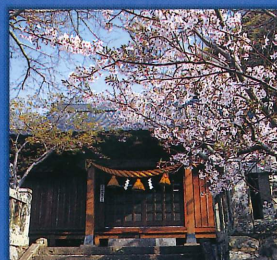
**A Course**  
For those who are confident walking...  
A steep and narrow climb to Ebisu Sama, the god of fishing, and a fantastic view of the sea.

### Hotojima Walk! Our recommendation

- A Course** 30min. — Kamo Shrine course
- B Course** 1hr — A course from Kaitokuji Temple through the town and over the mountains
- C Course** 1hr 30min. —
- D Course** 30min. — Kaitokuji Temple course
- E Course** 1hr — A course from Kaitokuji Temple through the town to the memorial Monument
- F Course** 1hr 30min. —



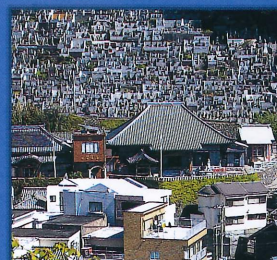
3 Ishizuchi Shrine



4 Kamo Shrine



6 Housyoji Temple



7 Kaitokuji Temple



8 Well of Odaishi



11 Fishing Industry Communications



13 Otoragozen



2 Seno Beach

Looking over "Hotojima" Village Photo Spot

Kaitoku Temple Grounds  
The chimney of a cement factory can be seen from here.

Hone Jizo  
Burial Jizo for the 127 lives lost in the bombing tragedy.



10 Emperor Keikou's Stone Chair

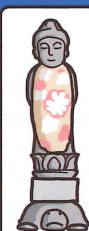
The tide would rush around what then was a huge rock, a seat for Emperor Keiko who came to exterminate the Kumaso.



1 View of Takago Rock from Tohmi Mountain

Cafe Kazu

Memorial monument of the Hotojima bombing tragedy  
The misery and grief of wars are still lessons to be taught.



Nakanoshima Kan-non

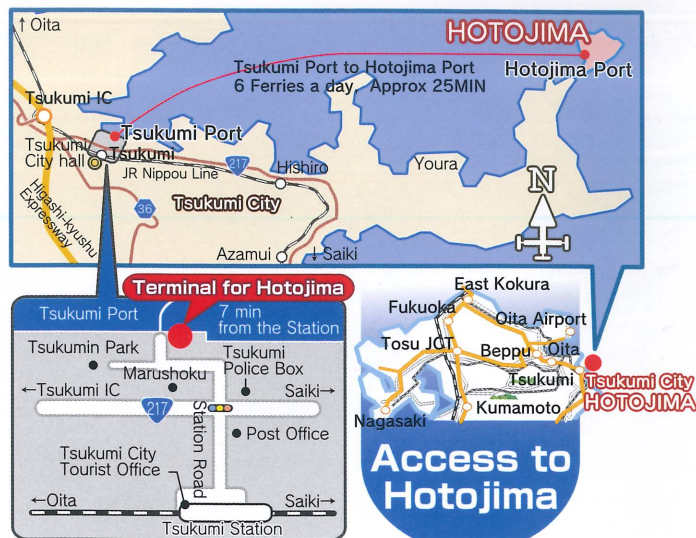
Kamonbai

Clusters of Matsubagiku  
Flowering April to June

Mamoto channel  
Sea with a strong current

Youra Peninsula





#### Contact for Tsukumi to Hotojima Ferry

Yamamaru Tsukumi Office (TEL/0972-82-2507)  
Hotojima Office (TEL/0972-87-2274)  
Charge (Adult ¥860 / Child ¥430)

#### Duration

Fukuoka IC to Tsukumi IC 2hrs30min / East Kokura IC to Tsukumi IC 2hrs /  
Oita IC to Tsukumi IC 25min

#### Accommodation

Yamauchi Inn (5 Rooms for up to 15 Persons) TEL 0972-87-2049

#### Tsukumi City Tourist Office

1-30 Chuo-machi, Tsukumi-shi, Oita pref.  
〒879-2441  
TEL / 0972-82-9521 FAX / 0972-82-7106  
http://tsukumiryoku.com/  
※Information is as of Nov. 2018



● Please check for closed dates.  
● Approx 70 Seats  
● TEL 0972-87-2024  
● Tuna Combo.Dish, from ¥2500  
● 11:00~14:00 18:00~21:00  
(Reservation required)  
**Hotojima Okawa**  
**Places to Eat**



#### Tuna Combo.Dish

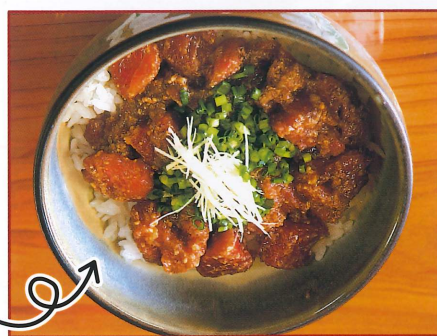
For tuna lovers, we recommend this dish.  
You can enjoy all kinds of tuna dishes.



#### Grilled Fish Head

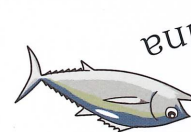
A traditional Miso soup made from the broth of the Tuna's head.

#### Fish Head Soup



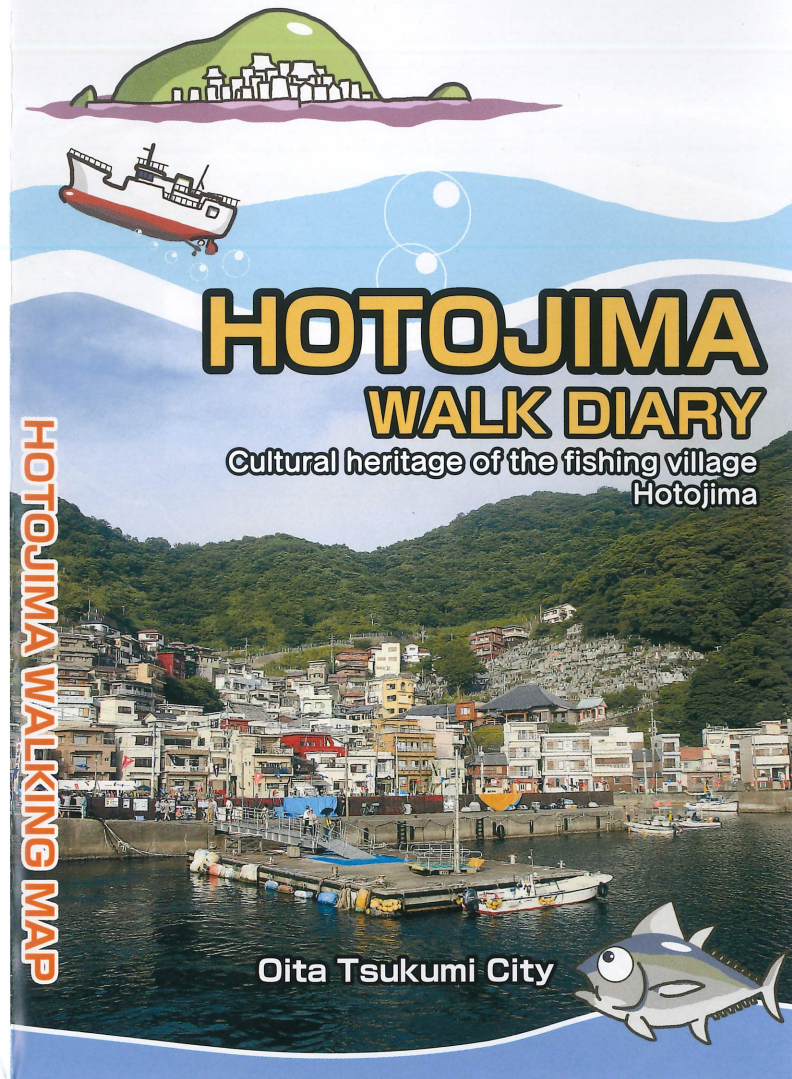
The Fisherman's treat of Tuna Sashimi dressed with a sweet sauce on the ship.

#### Hyuga Bowl



## FOOD OF HOTOJIMA

TUNA FISH



# Wow! Hotojima!

The Extraordinary Life of Hotojima



#### ▲ Wheel Barrows!!

They are used more than cars.



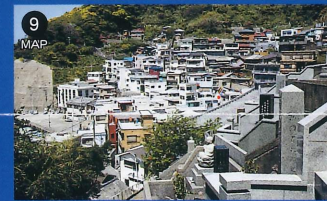
#### ▲ Tebo (A Large Basket)

Useful for getting around the slopes of Hotojima.



#### ▲ Life on the Island

Like a maze of slopes, steps and alleys.



#### ▲ The Graveyard

Living together with the Ancestors.

#### 12 A prefectural road?!!

You'll be surprised how narrow it is.



#### ▲ Preparing for Dinner

Fish for a dish.



#### ▲ Meow!

Cats enjoy the peace.

Hotojima, on the top of the Tsukumi Youra Peninsula has been a Tuna fishing Village since 1890. With a population of 700 People. Hotojima has been elected as one of the hundred cultural heritage fishery fishing villages to leave for the future.

#### The Name Hotojima?

When Emperor Keikou Anchored his ship here, he was overwhelmed by the beauty of the sea, and hushed the word HOTSUME (a kind of seaweed). The name Hotojima originated from this word.

#### "Kainan Sho-ki"

Written by Yanagita Kunio

When Yanagita Kunio, a Folklorist spent 2 days on the Island in 1921, he noticed that with the population and the space available, the whole Island was functioning like one big house. And even today there is a family like atmosphere between the people.

#### "Maguro" of Hotojima

Once there were 167 boats and a 1000 employees, but over the years has gone down to 13 boats and 130 employees, of which over half are non Japanese.

# Encounter Hotojima

#### Hotojima Festival



Kamo Shrine, The Islands Guardian Summer Festival, sees the port full of people, with Mikoshi and Shishi dancing into the sea.

#### Bombing tragedy at Hotojima Primary School



On 25th of July 1945, an American plane dropped a bomb on Hotojima Primary School. 125 children and two teachers were killed, and 75 children were injured. The memorial at the school entrance is the symbol of peace.